

SOUND BASICS

KEY NOTES

- difference between Channels and Tracks
- audio “pipeline” in FT353 Workflow
- microphone pick up patterns
- audio recorder set-up and record audio files
- Record Levels @ **-12dB** (Post Mix @ -20dB)
- importance of mic placement and Gain control

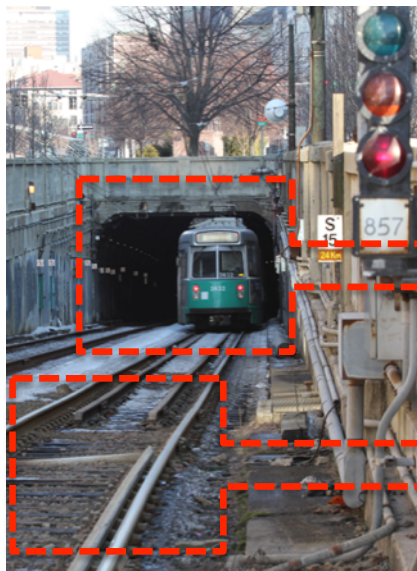
CHANNELS VS. TRACKS

channel

- conduit (space) in which audio signals pass through

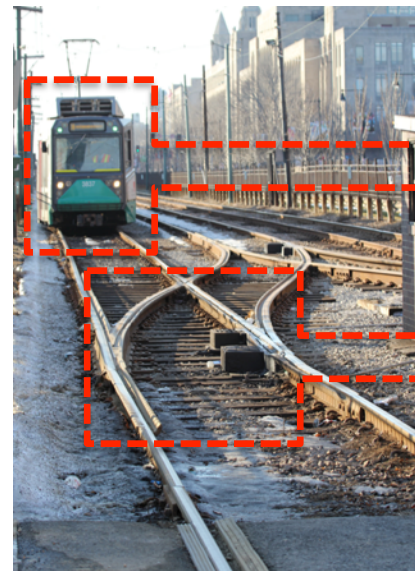
track

- path in which audio signal is located (travels on)



tunnel ≈ channel

track ≈ track



train ≈ audio

switch ≈ select

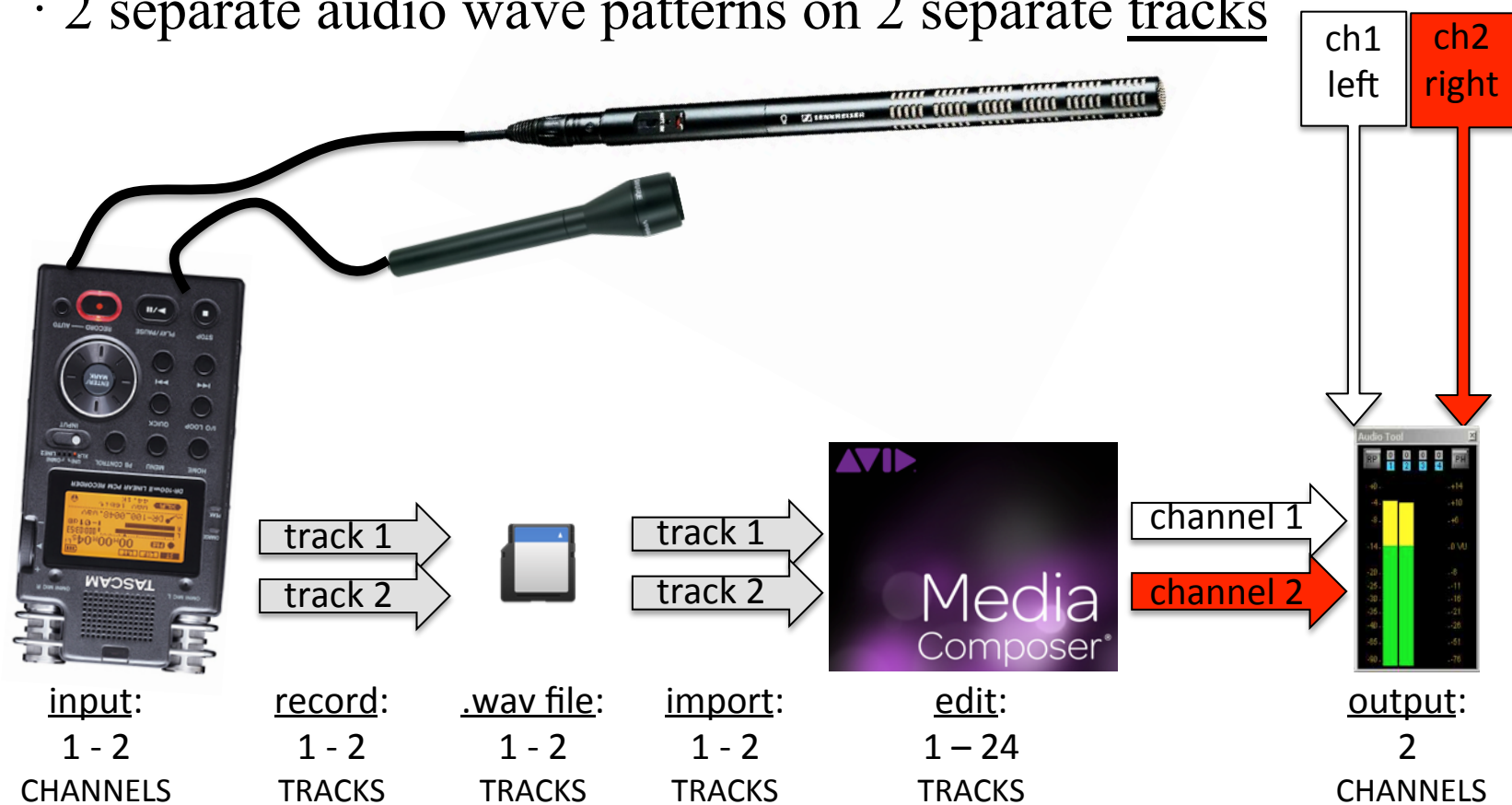
AUDIO PIPELINE (FT353 WORKFLOW)

2 channel recorder

- 2 microphone inputs

2 track file

- 2 separate audio wave patterns on 2 separate tracks



TASCAM 100MKII SETUP

blogs.bu.edu/jamie

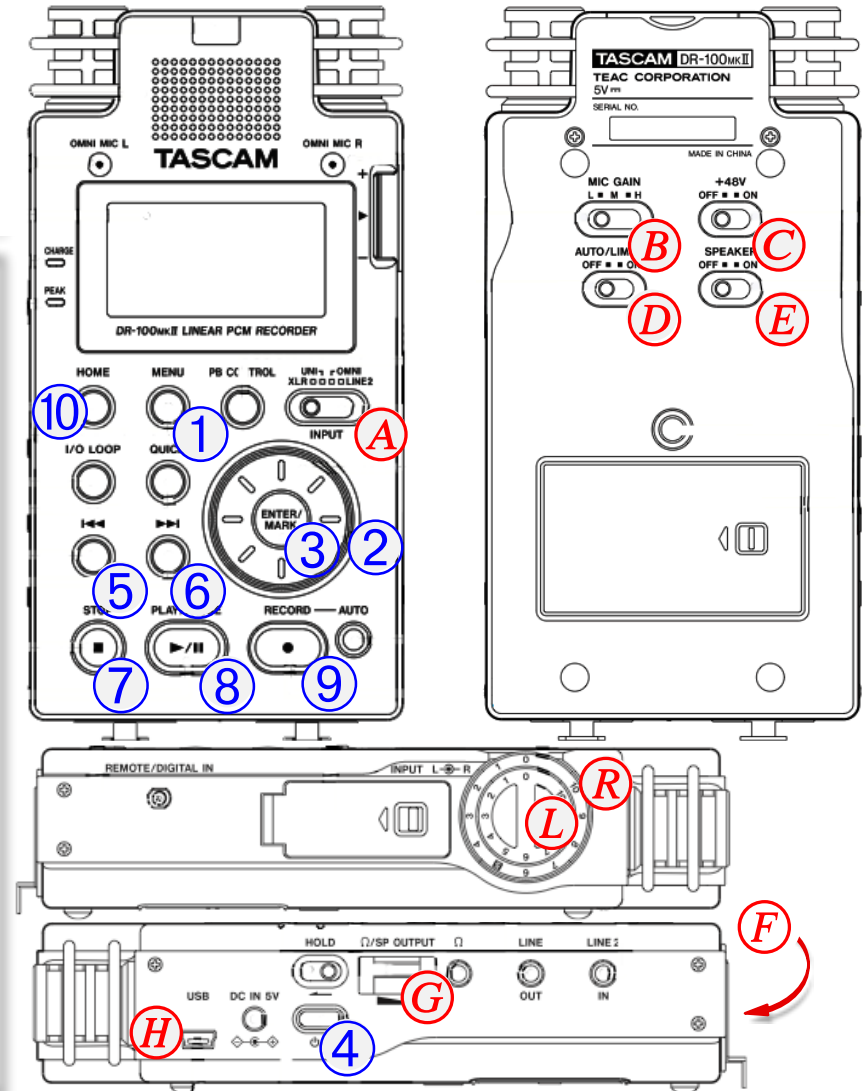
· TechSheet_100MKii

QUICK SET-UP MENU SET

1. **RESET** to factory
 [MENU]① ▶ SETUP ▶ INITIALIZE ▶ YES [ENTER]③
2. **SET** record settings
 [MENU]① ▶ REC SETTING ▶ FORMAT : **WAV 24bit**
 ▶ SAMPLE : **48k**
3. **FORMAT** media
 [MENU]① ▶ SETUP ▶ QUICK FORMAT ▶ YES [ENTER]③

SWITCH SET

- Ⓐ **SET** Input ▶ XLR
- Ⓑ **SET** Mic Gain ▶ H* (see Optional Set-Up)
- Ⓒ **SET** +48v(Phantom Power) ▶ OFF
- Ⓓ **SET** Auto/Limiter ▶ OFF
- Ⓔ **SET** Speaker ▶ OFF (see Optional Set-Up)
- Ⓕ **SET** Mic/Line ▶ MIC



AUDIO RECORD LEVEL

record levels

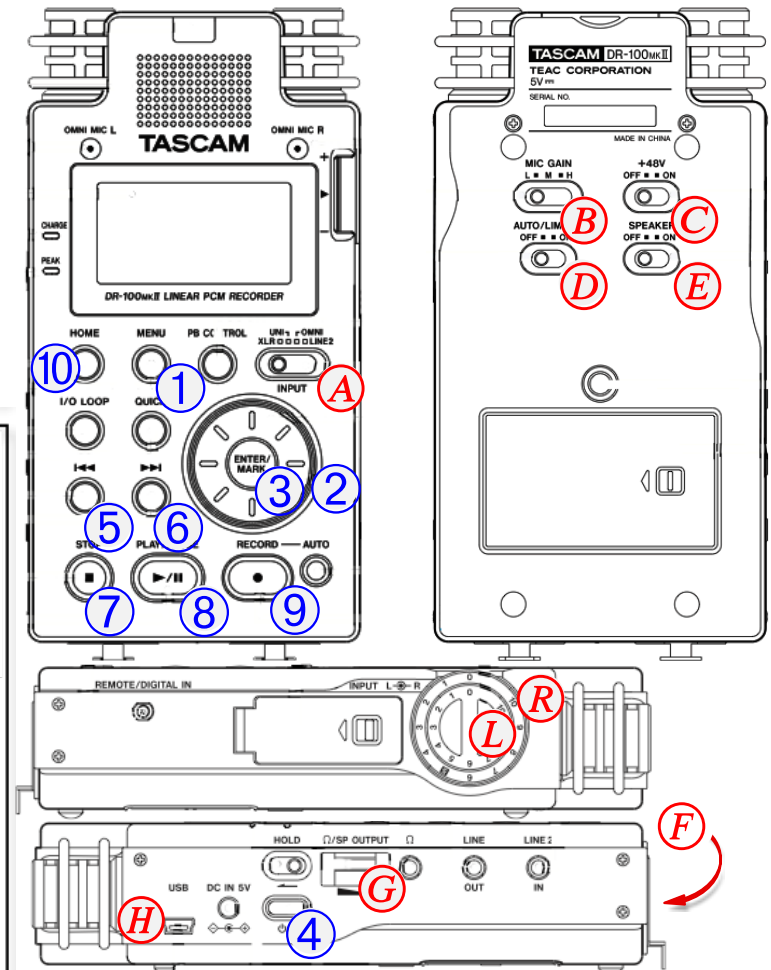
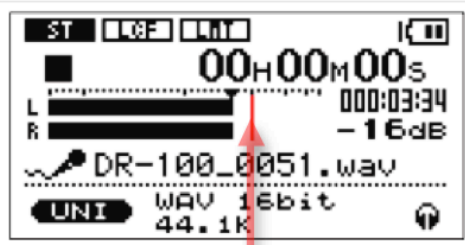
- peak meter levels should read **-12dB**

gain control

- adjust gain control to set levels
(**NOT** headphones)

RECORD

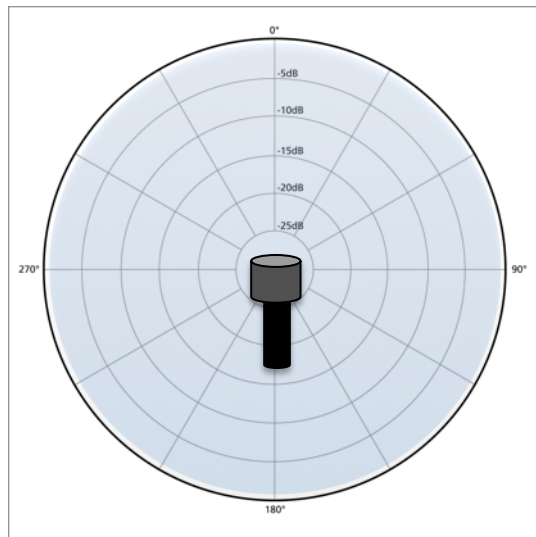
1. **ENTER** record-pause
[RECORD] ⑨ 1st press (flashes red)
2. **ADJUST** input gain **L** **R**
 - **ALL** record levels at -12 dB
 - low gain setting preferable
(close mic placement to avoid high gain)
3. **ADJUST** headphone volume
 - **DON'T** adjust input gain as headphone volume
4. **RECORD** file
[RECORD] ⑨ 2nd press (solid red)
≈ 1G/min. record time* (actual 1G/57sec.)



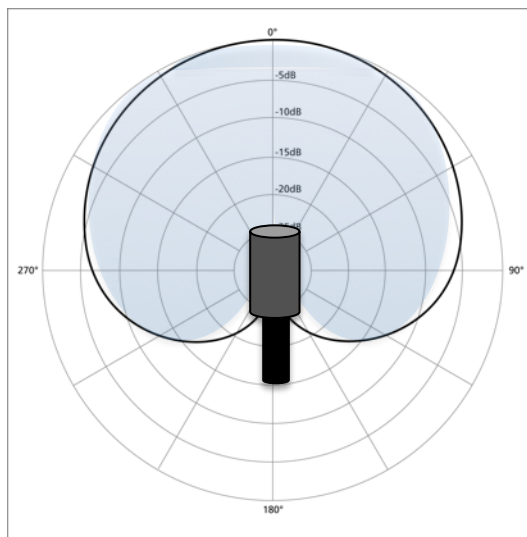
MICROPHONE PICK-UP PATTERNS

pick-up pattern

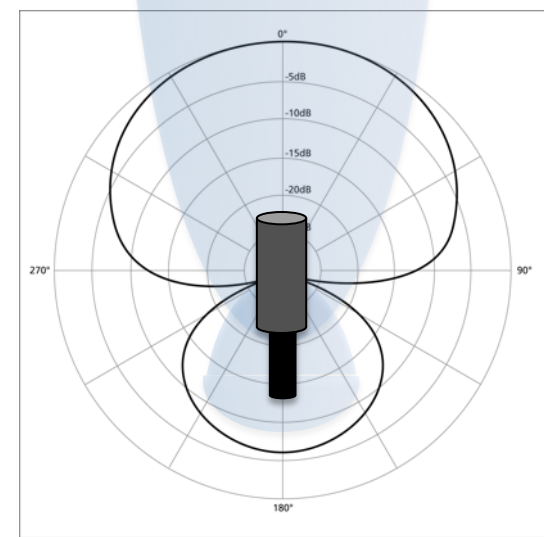
- direction in which microphone picks up (“hears”) sound waves



omni-directional



cardioid



super-cardioid
(hyper-cardioid)

RECORDING SOUND

gain control

- set gain control as low as possible

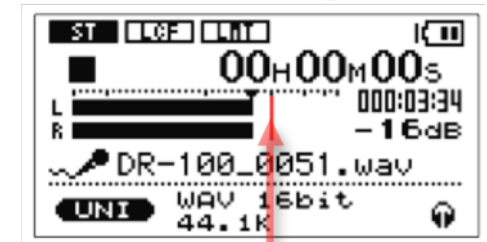
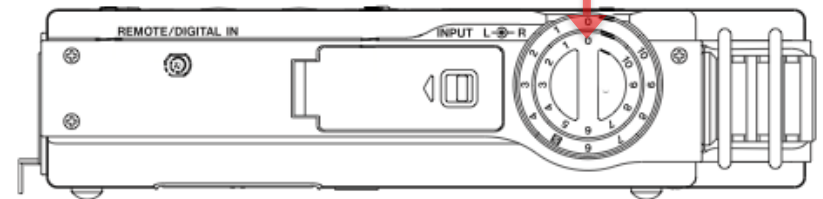
levels

- record @ -12dB

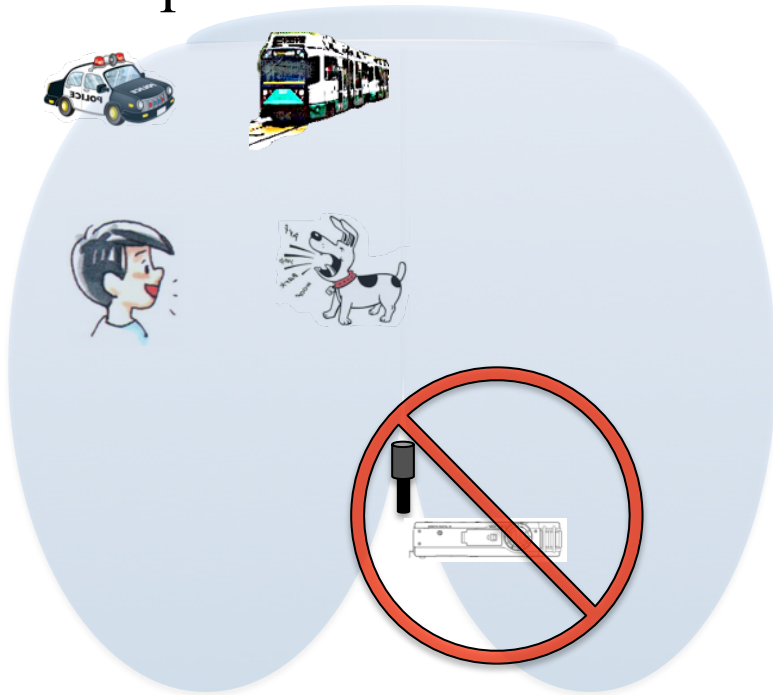
microphone placement

- place mic as close to subject as possible

5 or lower ideal



RECORD -12dB



TECHNICAL TERMS

channel: conduit audio signal travels through

track: location path audio of signal

-12dB: desired record level

gain: audio level control

pick-up patterns: direction microphone picks up sound

omni; all directions

cardiod; in front and all sides

hyper-cardiod; in front(with increased sensitivity) and behind