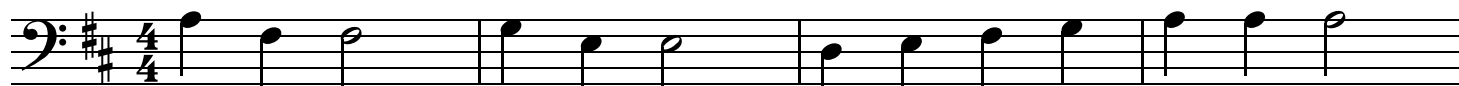


Lightly Row Cello

♩=120



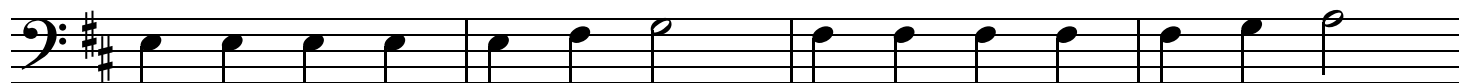
A 3 3 4 1 1 D 1 3 4 A A A

5



A 3 3 3 4 1 1 1 D 3 A A 3 3 3

9



1 1 1 1 1 3 4 3 3 3 3 3 4 A

13



A 3 3 3 4 1 1 1 D 3 A A 3 3 3